

NOTE: ALL DIMENSIONS ARE IN INCHES.

MATERIALS OF CONSTRUCTION:

BASE ELBOW: CAST DUCTILE IRON

LIFT-OUT FLANGE: CAST DUCTILE IRON

W/BRONZE SEALING RING

LOWER GUIDE BRACKET: BRONZE

ALL FASTENERS ARE 304 SERIES SST

USEABLE GUIDE RAIL SIZES: 1½" & 2"

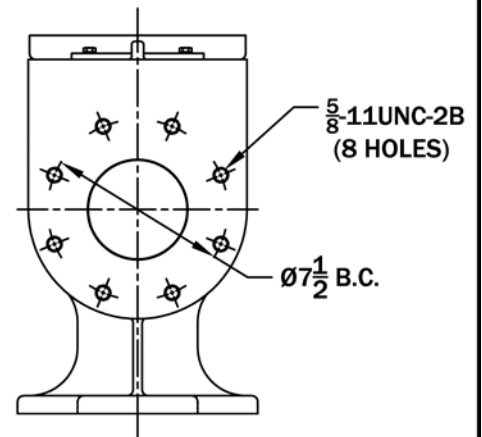
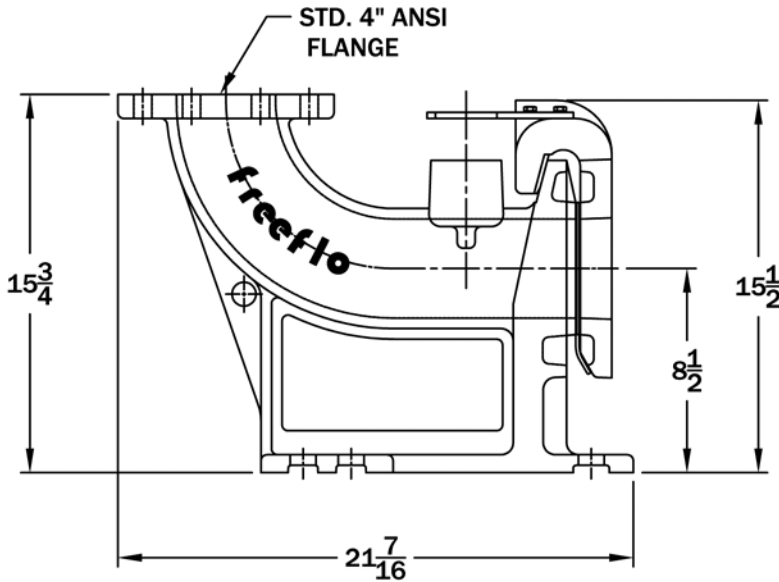
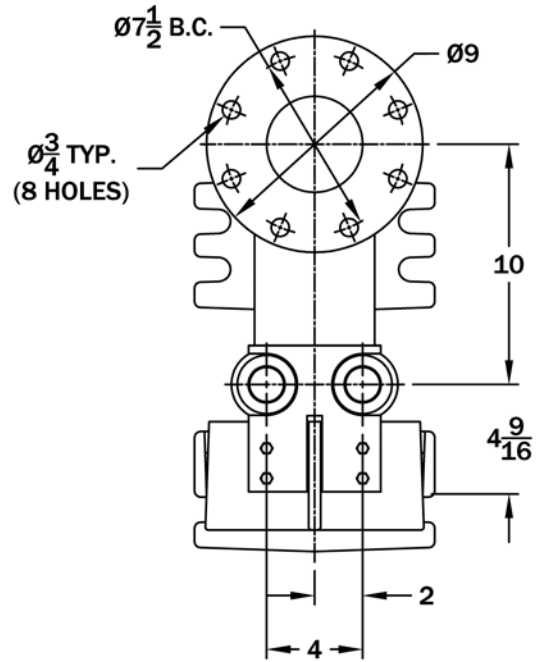
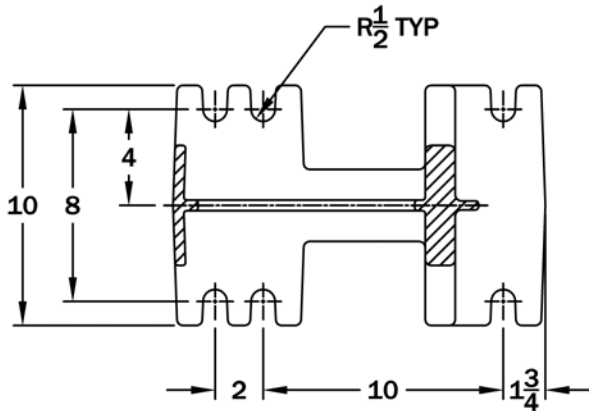
SPHERICAL SOLIDS SIZE: 4" Diameter.

MAXIMUM WEIGHT ALLOWANCE: 2000lbs.

SR-XP4

PAGE  
1

MOUNTING DIMENSIONS



INFORMATION CONTAINED IN THIS DRAWING USED WITH PERMISSION BY ORIGINAL AUTHORS.



SPECIFICATION SHEET  
DIMENSIONAL DATA

CHANGES	TOLERANCES	DRAWN BY	DATE
F	DECIMALS .XXX = ±.005	D. MIDDLETON	07/15/04
E	.XX = ±.010	MATERIAL SPECIFICATION:  AS NOTED	
D	FRACTIONAL		
C	X/X = ±.1/64		
B	ANGLES		
A	X' = ±1/2"		

SCALE:	PART NO.
1/8	SR-XP4