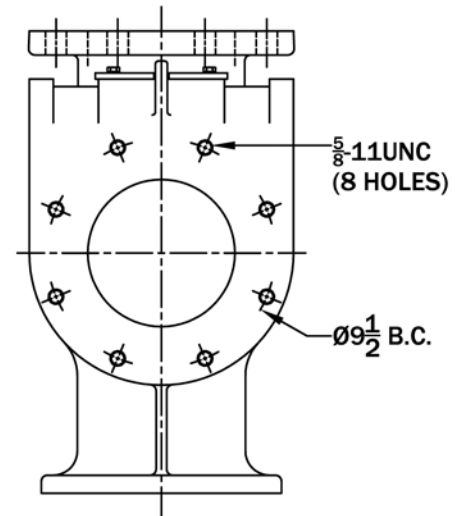
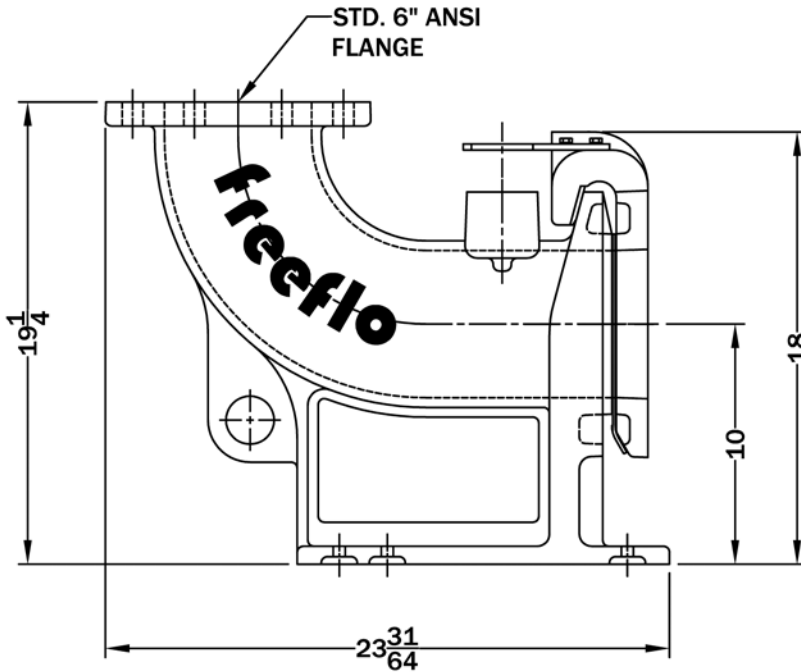
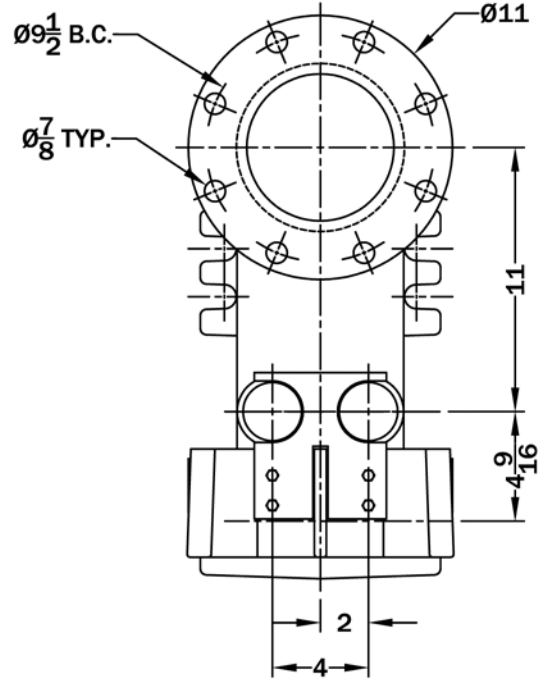
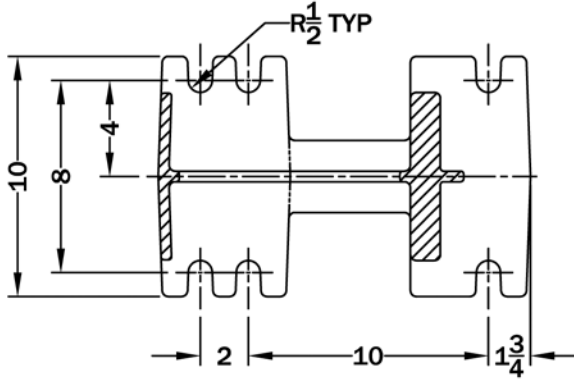


NOTE: ALL DIMENSIONS ARE IN INCHES.  
 MATERIALS OF CONSTRUCTION:  
 BASE ELBOW: CAST DUCTILE IRON  
 LIFT-OUT FLANGE: CAST DUCTILE IRON  
 W/BRONZE SEALING RING  
 LOWER GUIDE BRACKET: BRONZE  
 ALL FASTENERS ARE 304 SERIES SST  
 USEABLE GUIDE RAIL SIZES: 2"  
 SPHERICAL SOLIDS SIZE: 6" Diameter.  
 MAXIMUM WEIGHT ALLOWANCE: 2000lbs.

SR-XP6

PAGE  
1

MOUNTING DIMENSIONS



INFORMATION CONTAINED IN THIS DRAWING USED WITH PERMISSION BY ORIGINAL AUTHORS.



CHANGES	TOLERANCES	DRAWN BY	DATE
F	DECIMALS .XXX = ±.005	D. MIDDLETON	03/17/07
E	.XX = ±.010	MATERIAL SPECIFICATION:  AS NOTED	
D	FRACTIONAL		
C	X/X = ±.1/64		
B	ANGLES		
A	X' = ±1/2'		

SPECIFICATION SHEET DIMENSIONAL DATA	
SCALE: 1/8	PART NO. SR-XP6