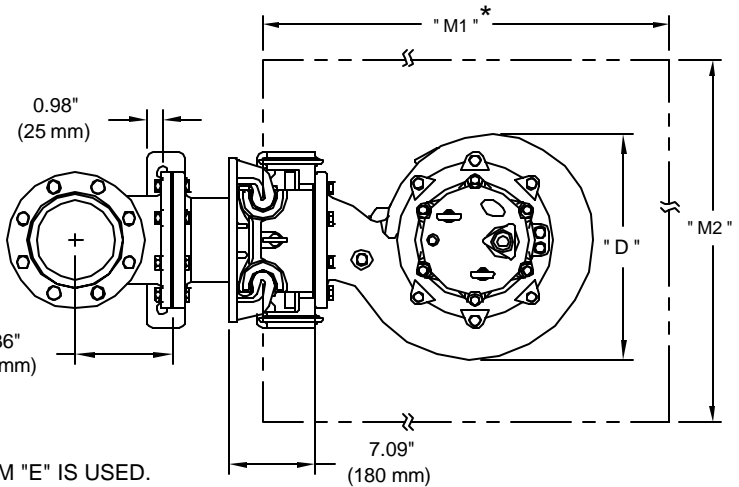




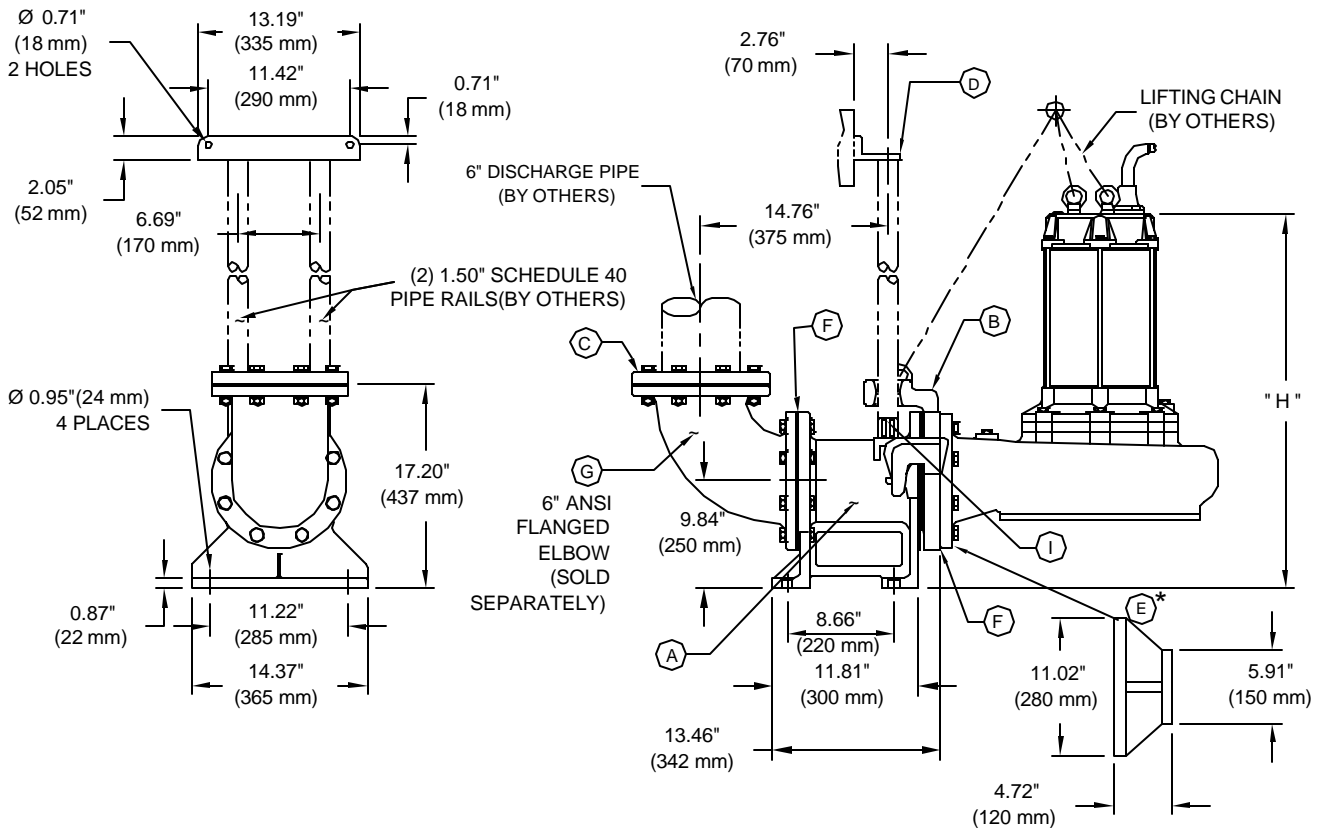
6" DISCHARGE SLIDE RAIL SYSTEM DIMENSIONAL DRAWING

SR150-ANSI CAST IRON (6" DISCHARGE)
SRX150SS-ANSI 316 CAST STAINLESS (6" DISCHARGE)

PUMP	H	D	M1*	M2	ADD KIT NEEDED
J55C	28.15" 715 mm	10.63" 270 mm	29.53" 750 mm	23.62" 600 mm	E*
J75C	28.35" 720 mm	10.63" 270 mm	29.53" 750 mm	23.62" 600 mm	E*
S55C	28.86" 733 mm	10.63" 270 mm	29.53" 750 mm	23.62" 600 mm	E*
S75C	33.19" 843 mm	10.63" 270 mm	29.53" 750 mm	23.62" 600 mm	E*
SK55C	28.27" 718 mm	16.54" 420 mm	29.53" 750 mm	23.62" 600 mm	E*
SK75C	30.24" 768 mm	16.54" 420 mm	29.53" 750 mm	23.62" 600 mm	E*
SK110C	31.34" 796 mm	18.90" 480 mm	41.34" 1050 mm	33.46" 850 mm	
SK150C	33.11" 841 mm	18.90" 480 mm	41.34" 1050 mm	33.46" 850 mm	



*NOTE: MUST ADD 4.72"(120 mm) TO DIMENSION "M1" IF ITEM "E" IS USED.



(DRAWING NOT TO SCALE)

BJM PUMPS - 123 SPENCER PLAIN ROAD, OLD SAYBROOK, CT 06475 - PHONE: 860-399-5937 - FAX: 860-399-7784

SRS PARTS DESCRIPTION

SLIDE RAIL SYSTEM MODEL SR150-ANSI CAST IRON (6")

POS#	DESCRIPTION	PART#	QTY
A	SLIDE RAIL BASE - 6"	SR150ANSIBASE	1
B	SLIDE RAIL PUMP BRACKET - 6"	SR150SLIDE	1
	BOLT	M05059	8
	LOCK WASHER	M00405	8
	FLAT WASHER	M00412	8
	LIFTING RING	M03429	1
C	DISCH. FLANGE - 6"	SR150ANSIFLANGE	1
	BOLT	M05068	8
	NUT	M00304	8
	LOCK WASHER	M00405	8
	FLAT WASHER	M00412	8
D	UPPER RAIL BRACKET	SR150CLEAT	1
E	COMPLETE ADAPTER KIT (Sold Separately) (INCLUDES ALL ITEMS LISTED BELOW)	SR150ADKIT	1
E	4" x 6" FLANGE ADAPTER	SR150ADAPTER	1
	GASKET 4" (BUNA-N)	M04073	1
	BOLT	M05066	4
	NUT	M00303	4
	LOCK WASHER	M00404	4
	FLAT WASHER	M00410	4
F	GASKET FOR SLIDE 6" (BUNA-N)	SR150-01B	1
	GASKET FOR DISCHARGE 6" (BUNA-N)	SR150-03B	1
G	COMPLETE ELBOW KIT (Sold Separately) (INCLUDES ALL ITEMS LISTED BELOW)	SR150ELBOW-KIT	
	DISCH. ELBOW - 6" (125 LB ANSI FLANGE)	M03838	1
	GASKET (BUNA-N)	SR150-03B	1
	BOLT	M05068	4
	NUT	M00304	4
	LOCK WASHER	M00405	4
	FLAT WASHER	M00412	4
I	SLIDE RAIL PEG (M10 X 35 BOLT & 10MM LOCK WASHER)	SR150PEG	2

Note: BJM recommends that Viton elastomers be used in sliderails when installed in High Temperature applications.

SLIDE RAIL SYSTEM MODEL SRX150SS-ANSI 316 CAST STAINLESS (6")

POS#	DESCRIPTION	PART#	QTY
A	SLIDE RAIL BASE - 6"	SRX150SSANSIBASE	1
B	SLIDE RAIL PUMP BRACKET - 6"	SRX150SSSLIDE	1
	BOLT	M05059	8
	LOCK WASHER	M00405	8
	FLAT WASHER	M00412	8
	LIFTING RING	M03429X	1
C	DISCH. FLANGE - 6"	SRX150SSANSIFLANGE	1
	BOLT	M05068	8
	NUT	M00304	8
	LOCK WASHER	M00405	8
	FLAT WASHER	M00412	8
D	UPPER RAIL BRACKET	SRX150SSCLEAT	1
E	COMPLETE ADAPTER KIT (Sold Separately) (INCLUDES ALL ITEMS LISTED BELOW)	SRX150SSADKIT	1
E	4" x 6" FLANGE ADAPTER	SRX150SSADAPTER	1
	GASKET 4" (VITON)	M04073V	1
	BOLT	M05066	4
	NUT	M00303	4
	LOCK WASHER	M00404	4
	FLAT WASHER	M00410	4
F	GASKET FOR SLIDE 6" (VITON)	SR150-01V	1
	GASKET FOR DISCHARGE 6" (VITON)	SR150-03V	1
G	COMPLETE ELBOW KIT (Sold Separately) (INCLUDES ALL ITEMS LISTED BELOW)	SRX150SSELBOW-KIT	
	DISCH. ELBOW - 6" (125 LB ANSI FLANGE)	M03838X	1
	GASKET (VITON)	SR150-03V	1
	BOLT	M05068	4
	NUT	M00304	4
	LOCK WASHER	M00405	4
	FLAT WASHER	M00412	4
I	SLIDE RAIL PEG (M10 X 35 BOLT & 10MM LOCK WASHER)	SRX150SSPEG	2