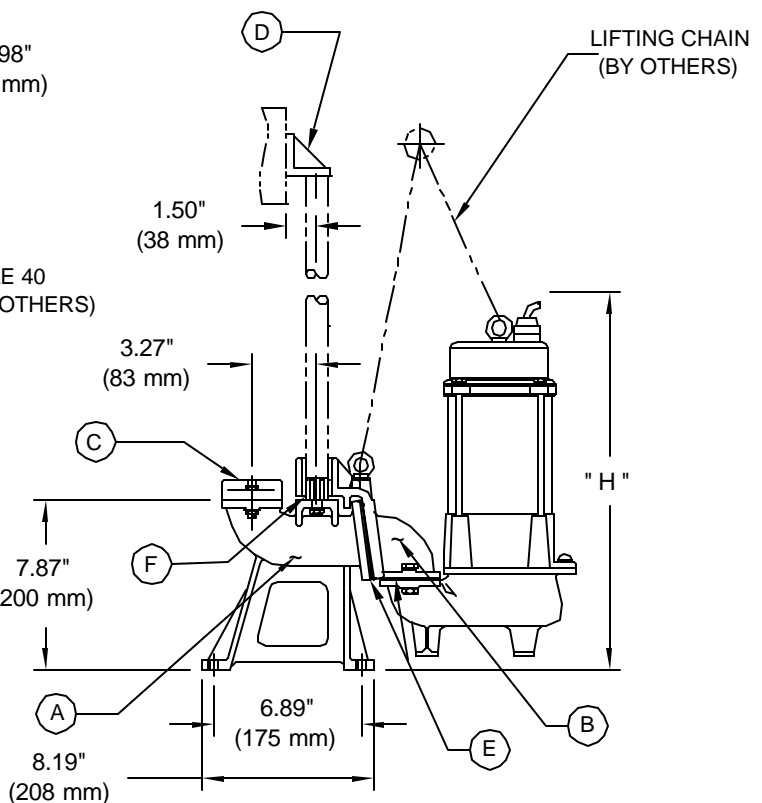
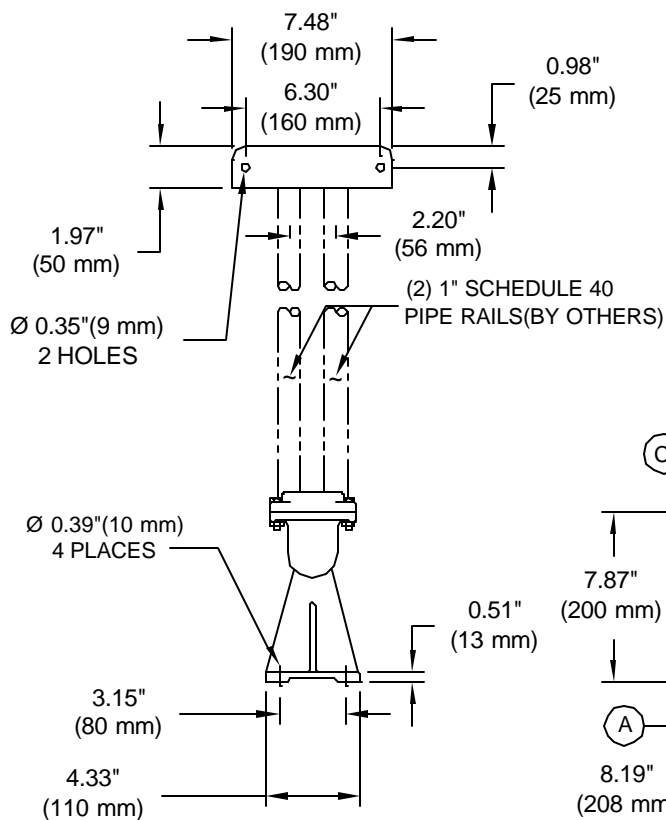
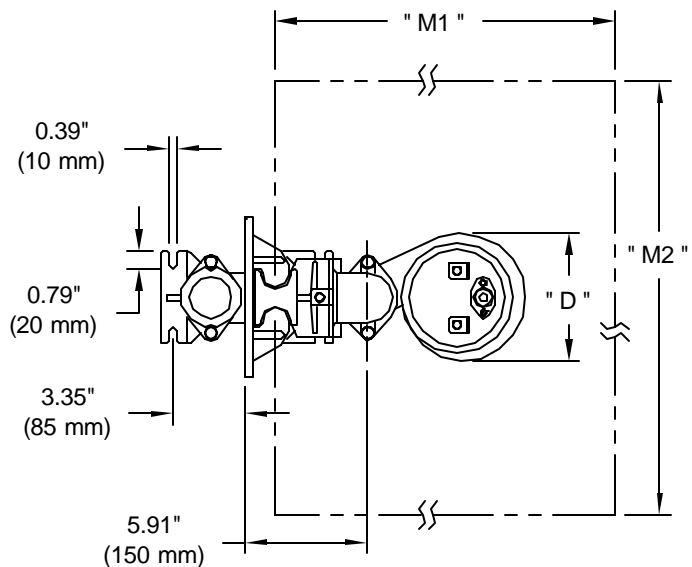




2" DISCHARGE SLIDE RAIL SYSTEM DIMENSIONAL DRAWING

SR50SV-1 CAST IRON (2" DISCHARGE)

PUMP	H	D	M1	M2
SV400	13.78"	5.31"	19.69"	13.78"
	350 mm	135 mm	500 mm	350 mm



(DRAWING NOT TO SCALE)

BJM PUMPS - 123 SPENCER PLAIN ROAD, OLD SAYBROOK, CT 06475 - PHONE: 860-399-5937 - FAX: 860-399-7784

SRS PARTS DESCRIPTION

**SLIDE RAIL SYSTEM MODEL SR50-SV-1 CAST IRON (2")
(SV400 Only)**

POS#	DESCRIPTION	PART#	QTY
A	SLIDE RAIL BASE - 2"	SR50SV-1BASE	1
B	SLIDE RAIL PUMP BRACKET - 2"	SR50-SVSLIDE	1
	BOLT	M05041	2
	LOCK WASHER	M00402	4
	FLAT WASHER	M00403	2
	NUT	M00301	2
	LIFTING RING	M03421	1
C	FLANGE - 2"NPT	M03822	1
	BOLT	M05015	2
	NUT	M00301	2
	LOCK WASHER	M00402	2
	GASKET 2" (BUNA-N)	M04070	1
D	UPPER RAIL BRACKET	SR50-SVCLEAT	1
E	GASKET FOR SLIDE (BUNA-N)	SR50-01B	1
	GASKET FOR PUMP (BUNA-N)	SR50-02B	1
F	SLIDE RAIL PEG (M8 X 25 BOLT, 8MM FLAT WASHER, 8MM LOCK WASHER)	SR50PEG	2