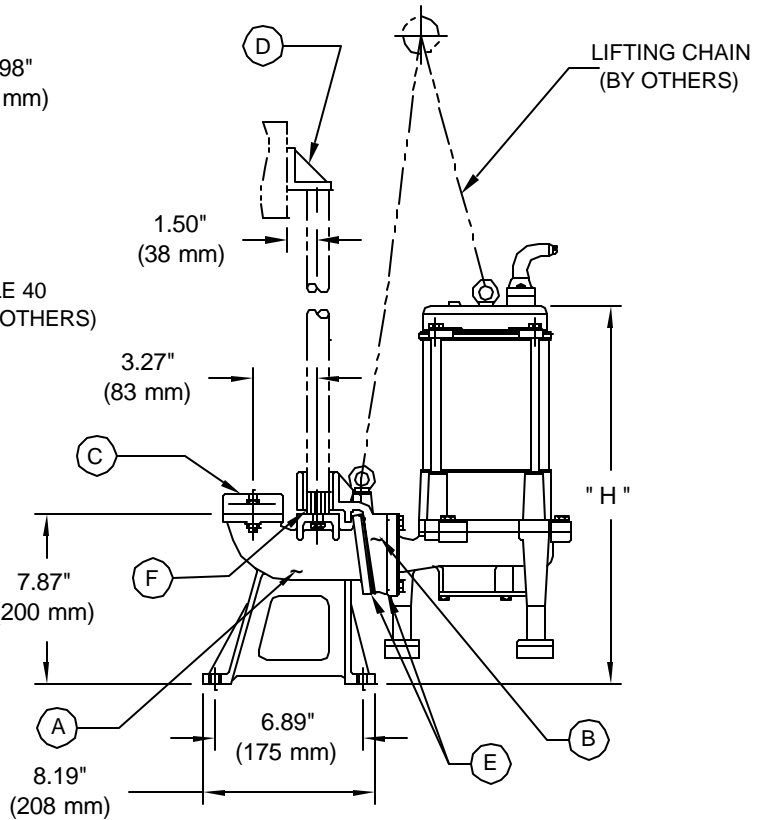
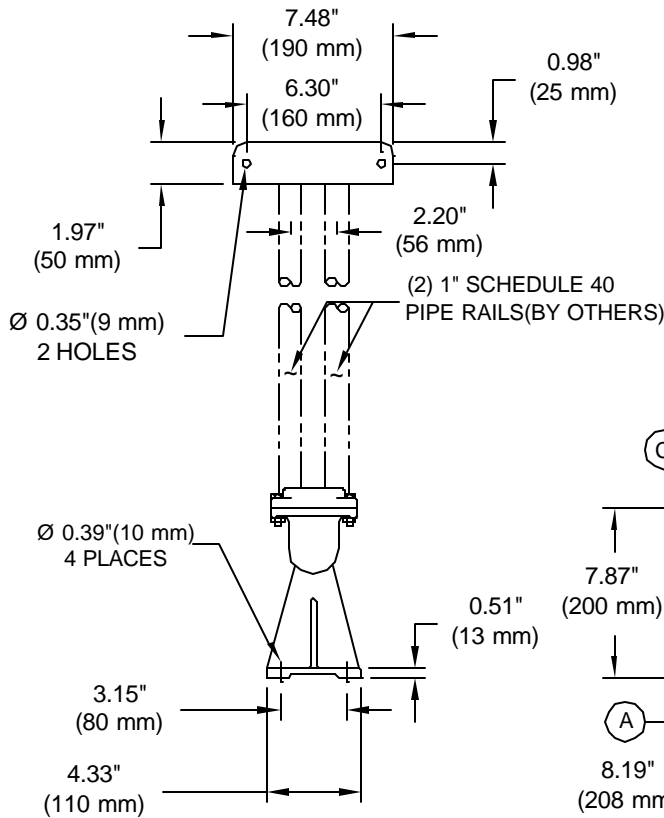
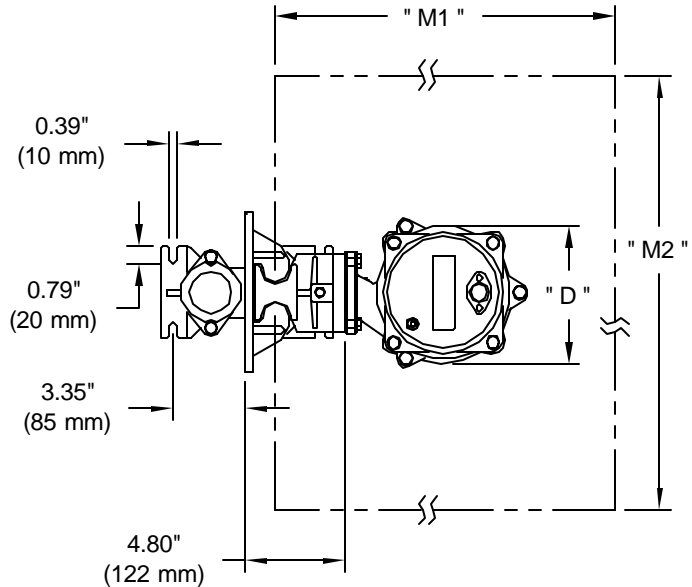




2" DISCHARGE SLIDE RAIL SYSTEM DIMENSIONAL DRAWING

SR50-1 CAST IRON (2" DISCHARGE)
SRX50SS-1 316 CAST STAINLESS (2" DISCHARGE)

| PUMP | H | D | M1 | M2 |
|---------------|--------|--------|--------|--------|
| S & SK750C-2" | 19.69" | 7.68" | 21.65" | 13.78" |
| | 500 mm | 195 mm | 550 mm | 350 mm |
| S & SK08C-2" | 17.32" | 7.68" | 21.65" | 13.78" |
| | 440 mm | 195 mm | 550 mm | 350 mm |
| G1200 | 20.08" | 7.09" | 21.65" | 13.78" |
| | 510 mm | 180 mm | 550 mm | 350 mm |
| G1500, G1500H | 21.97" | 7.09" | 21.65" | 13.78" |
| | 558 mm | 180 mm | 550 mm | 350 mm |
| G12 | 17.80" | 7.09" | 21.65" | 13.78" |
| | 452 mm | 180 mm | 550 mm | 350 mm |
| G15 | 19.33" | 7.09" | 21.65" | 13.78" |
| | 491 mm | 180 mm | 550 mm | 350 mm |
| G22 | 21.02" | 9.45" | 23.62" | 15.75" |
| | 534 mm | 240 mm | 600 mm | 400 mm |
| G37 | 21.61" | 9.45" | 23.62" | 15.75" |
| | 549 mm | 240 mm | 600 mm | 400 mm |



(DRAWING NOT TO SCALE)

BJM PUMPS - 123 SPENCER PLAIN ROAD, OLD SAYBROOK, CT 06475 - PHONE: 860-399-5937 - FAX: 860-399-7784

SRS PARTS DESCRIPTION

SLIDE RAIL SYSTEM MODEL SR50-1 CAST IRON (2")

| POS# | DESCRIPTION | PART# | QTY |
|------|---|------------|-----|
| A | SLIDE RAIL BASE - 2" | SR50-1BASE | 1 |
| B | SR50SLIDE | SR50SLIDE | 1 |
| | BOLT | M05015 | 4 |
| | LOCK WASHER | M00402 | 4 |
| | FLAT WASHER | M00403 | 4 |
| | LIFTING RING | M03421 | 1 |
| C | FLANGE - 2" NPT | M03822 | 1 |
| | BOLT | M05015 | 2 |
| | NUT | M00301 | 2 |
| | LOCK WASHER | M00402 | 2 |
| | GASKET (BUNA-N) | M04070 | 1 |
| D | UPPER RAIL BRACKET | SR50CLEAT | 1 |
| E | GASKET FOR SLIDE (BUNA-N) | SR50-01B | 1 |
| | GASKET FOR PUMP (BUNA-N) | SR50-02B | 1 |
| F | SLIDE RAIL PEG (M8 X 25 BOLT, 8MM FLAT WASHER, 8MM LOCK WASHER) | SR50PEG | 2 |

Note: BJM recommends that Viton elastomers be used on slide rails when installed in High Temperature applications.

SLIDE RAIL SYSTEM MODEL SRX50SS-1 316 CAST STAINLESS (2")

| POS# | DESCRIPTION | PART# | QTY |
|------|--|---------------|-----|
| A | SLIDE RAIL BASE - 2" | SRX50SS-1BASE | 1 |
| B | SR50SLIDE | SRX50SSSLIDE | 1 |
| | BOLT | M05015 | 4 |
| | LOCK WASHER | M00402 | 4 |
| | FLAT WASHER | M00403 | 4 |
| | LIFTING RING | M03421X | 1 |
| C | FLANGE - 2" NPT | M03822 | 1 |
| | BOLT | M05015 | 2 |
| | NUT | M00301 | 2 |
| | LOCK WASHER | M00402 | 2 |
| | GASKET (VITON) | M04070V | 1 |
| D | UPPER RAIL BRACKET | SRX50SSCLEAT | 1 |
| E | GASKET FOR SLIDE (VITON) | SR50-01V | 1 |
| | GASKET FOR PUMP (VITON) | SR50-02V | 1 |
| F | SLIDE RAIL PEG (M8 X 25 BOLT, 8MM FLAT WASHER, 8MM LOCK WASHER) | SRX50SSPEG | 2 |