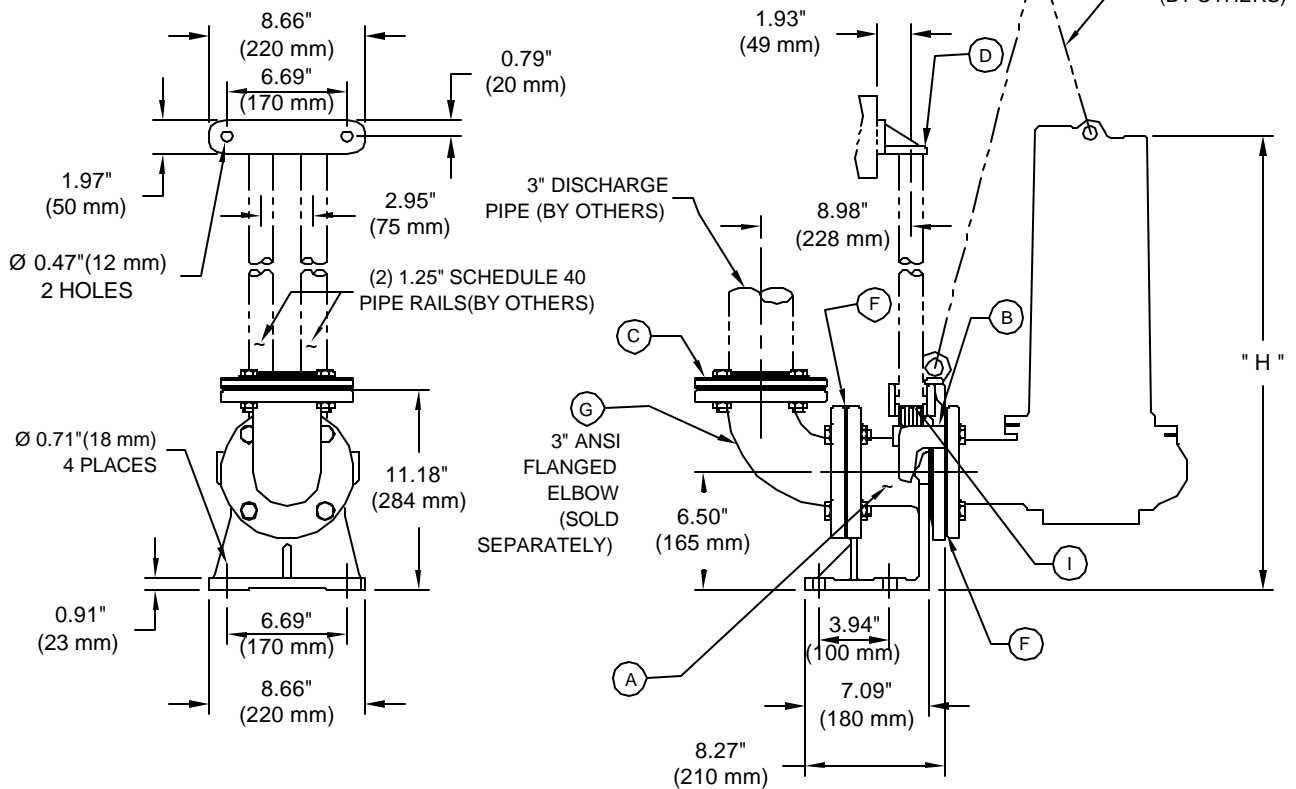
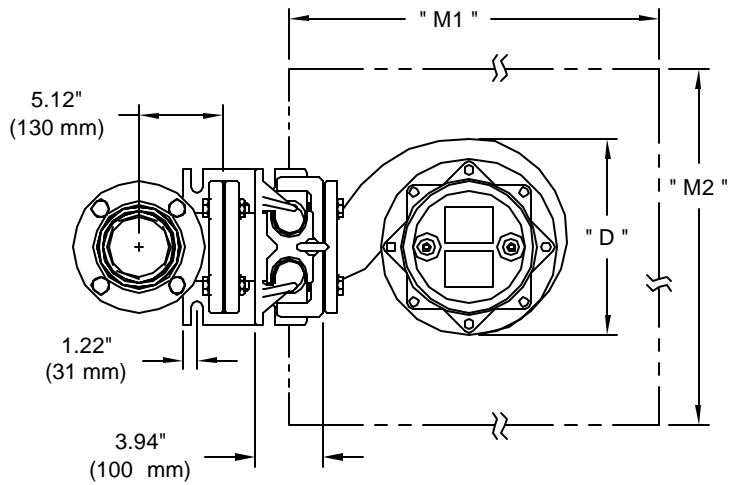




3" DISCHARGE SLIDE RAIL SYSTEM DIMENSIONAL DRAWING

SR80-ANSI CAST IRON (3" DISCHARGE)
SRX80SS-ANSI 316 CAST STAINLESS (3" DISCHARGE)

PUMP	H	D	M1	M2
S & SK750C-3"	20.67" 525 mm	7.68" 195 mm	21.65" 550 mm	17.72" 450 mm
SV750C	20.67" 525 mm	7.09" 180 mm	21.65" 550 mm	17.72" 450 mm
S & SK08C-3"	18.31" 465 mm	7.68" 195 mm	21.65" 550 mm	17.72" 450 mm
SV08C	18.31" 465 mm	7.09" 180 mm	21.65" 550 mm	17.72" 450 mm
S & SK1500C	21.26" 540 mm	9.45" 240 mm	21.65" 550 mm	17.72" 450 mm
SV 1500	22.24" 565 mm	8.27" 210 mm	21.65" 550 mm	17.72" 450 mm
S & SK15C	18.50" 470 mm	9.45" 240 mm	21.65" 550 mm	17.72" 450 mm
SV 15	18.90" 480 mm	8.27" 210 mm	21.65" 550 mm	17.72" 450 mm
S & SK22C	20.87" 530 mm	9.84" 250 mm	23.62" 600 mm	17.72" 450 mm
SV 22	21.65" 550 mm	9.84" 250 mm	23.62" 600 mm	17.72" 450 mm
S & SK37C	23.23" 590 mm	9.84" 250 mm	23.62" 600 mm	17.72" 450 mm
SV 37	24.02" 610 mm	9.84" 250 mm	23.62" 600 mm	17.72" 450 mm



(DRAWING NOT TO SCALE)

BJM PUMPS - 123 SPENCER PLAIN ROAD, OLD SAYBROOK, CT 06475 - PHONE: 860-399-5937 - FAX: 860-399-7784

REVISION 8/17/2005

Page 1 of 1

SPECIFICATIONS SUBJECT TO CHANGE WITHOUT NOTICE

SLIDE RAIL SYSTEM MODEL SR80-ANSI CAST IRON (3")

POS#	DESCRIPTION	PART#	QTY
A	SLIDE RAIL BASE - 3"	SR80ANSIBASE	1
B	SLIDE RAIL PUMP BRACKET - 3"	SR80SLIDE	1
	BOLT	M05031	4
	LOCK WASHER	M00407	4
	FLAT WASHER	M00409	4
	LIFTING RING	M03427	1
C	DISCH. FLANGE - 3" NPT	SR80ANSIFLANGE	1
	BOLT	M05067	4
	NUT	M00304	4
	LOCK WASHER	M00405	4
	FLAT WASHER	M00412	4
D	UPPER RAIL BRACKET	SR80CLEAT	1
F	GASKET FOR SLIDE (BUNA-N)	SR80-01B	1
	GASKET FOR DISCHARGE (BUNA-N)	SR80-03B	1
G	COMPLETE ELBOW KIT (Sold Separately) (INCLUDES ALL ITEMS LISTED BELOW)	SR80ELBOW-KIT	
	DISCH. ELBOW - 3" (125 LB ANSI FLANGE)	M03836	1
	GASKET (BUNA-N)	SR80-03B	1
	BOLT	M05067	4
	NUT	M00304	4
	LOCK WASHER	M00405	4
	FLAT WASHER	M00412	4
I	SLIDE RAIL PEG (M8 X 30 BOLT & 8MM LOCKWASHER)	SR80PEG	2

Note: BJM recommends that Viton elastomers be used on sliderails when installed in High Temperature applications.

SLIDE RAIL SYSTEM MODEL SRX80SS-ANSI 316 CAST STAINLESS (3")

POS#	DESCRIPTION	PART#	QTY
A	SLIDE RAIL BASE - 3"	SRX80SSANSIBASE	1
B	SLIDE RAIL PUMP BRACKET - 3"	SRX80SSSLIDE	1
	BOLT	M05031	4
	LOCK WASHER	M00407	4
	FLAT WASHER	M00409	4
	LIFTING RING	M03427X	1
C	DISCH. FLANGE - 3" NPT	SRX80SSANSIFLANGE	1
	BOLT	M05067	4
	NUT	M00304	4
	LOCK WASHER	M00405	4
	FLAT WASHER	M00412	4
D	UPPER RAIL BRACKET	SRX80SSCLEAT	1
F	GASKET FOR SLIDE (VITON)	SR80-01V	1
	GASKET FOR DISCHARGE (VITON)	SR80-03V	1
G	COMPLETE ELBOW KIT (Sold Separately) (INCLUDES ALL ITEMS LISTED BELOW)	SRX80SSELBOW-KIT	
	DISCH. ELBOW - 3" (125 LB ANSI FLANGE)	M03836X	1
	GASKET (VITON)	SR80-03V	1
	BOLT	M05067	4
	NUT	M00304	4
	LOCK WASHER	M00405	4
	FLAT WASHER	M00412	4
I	SLIDE RAIL PEG (M8 X 30 BOLT & 8MM LOCK WASHER)	SRX80SSPEG	2